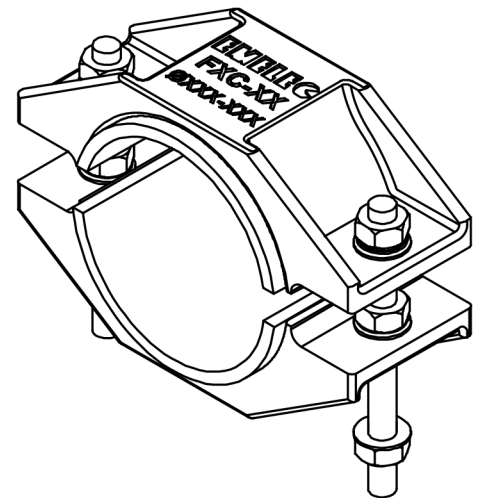
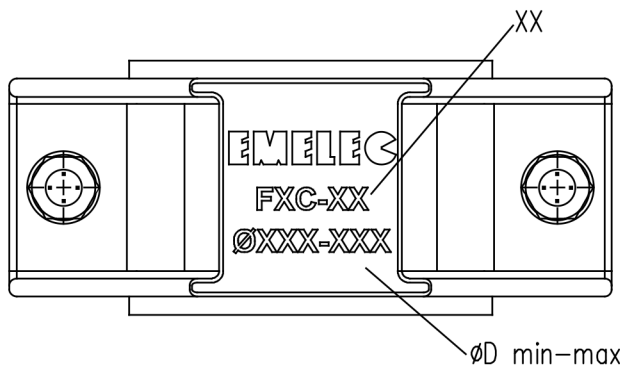
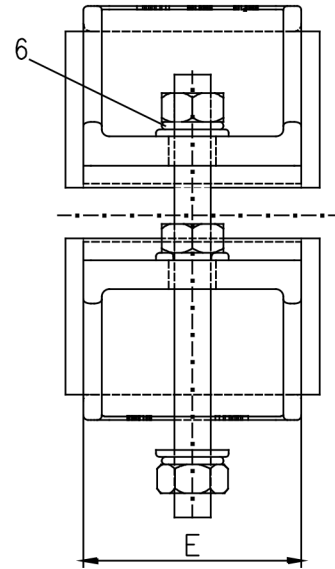
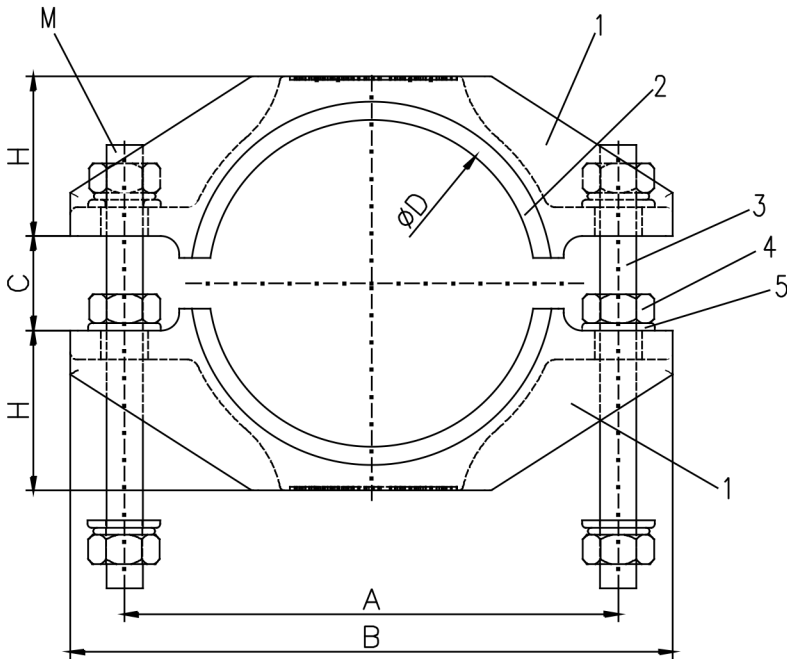


# Befestigungsbride «FXC»

Aluminium, einfache Verschraubung



Abmessungen in mm								
Typ (XX)	Ø D min-max	A	B	C	E	H	M	Gewicht
FXC-00	Ø 20-30	70	90	12-22	45	15	M8x110	290 g
FXC-01	Ø 30-40	80	100			20		320 g
FXC-02	Ø 40-50	90	110			25		390 g
FXC-03	Ø 50-60	100	120			30		420 g
FXC-04	Ø 60-70	110	130			35		540 g
FXC-05	Ø 70-80	120	140	16-26	60	40	M10x130	570 g
FXC-06	Ø 80-90	136	166			45	870 g	
FXC-07	Ø 90-100	146	176			50	M12x150	890 g
FXC-08	Ø 100-110	156	186			55	930 g	
FXC-09	Ø 110-120	166	196			60	M12x170	950 g
FXC-10	Ø 120-130	176	206	18-28	90	65	M16x185	980 g
FXC-11	Ø 130-140	196	226			75		2'750 g
FXC-12	Ø 140-150	206	236			80		2'850 g

Stückliste			
	Name des Teils	Material	Menge
1	Ober-Unterschale	AL8-SiMn10	2
2	Gummieinlage	EPDM	2
3	Schraube	Stainless Steel	2
4	6kt. Mutter	Stainless Steel	6
5	Unterlegscheibe	Stainless Steel	6
6	Federring	Stainless Steel	4

TRESCO AG

Seebleichestrasse 60  
CH-9404 Rorschacherberg

Tel. +41 71 544 50 00  
Fax +41 71 544 50 09

info@tresco.ch  
www.tresco.ch

**TRESCO**<sup>®</sup>  
VALUED PARTNERSHIP